

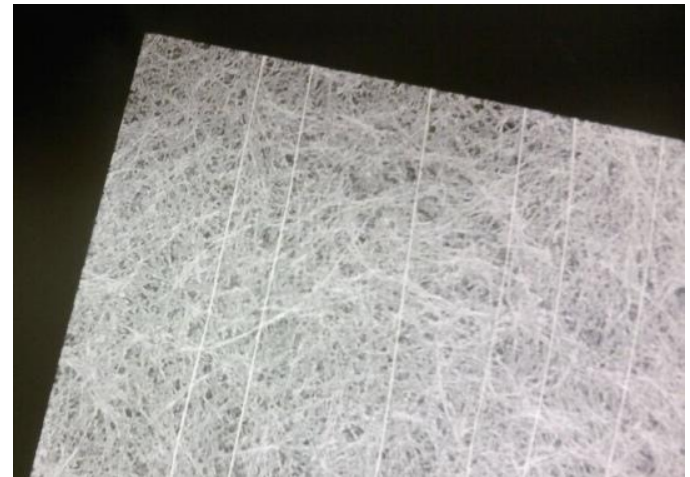
R-Series Fiberglass Mat

- 100% chopped E-grade fiberglass
- Wet-laid process mat
- Dimensionally stable
- Consistent fiber dispersion
- Consistent density
- Machine direction reinforcement yarn

GarCo's R-series mat is manufactured from consistent length chopped fiberglass yarn in a wet-laid process. This method of manufacture generates extremely uniform fiber dispersion providing superior physical and aesthetic properties. The R-series light to medium mats have been accepted by industry as a solution for demanding requirements of stability and durability.

GarCo's R-series mat is manufactured from M-fiber to produce consistent coverage and strength at competitive price. Both Modified UF and Acrylic binders are available to meet the needs of your process and product features.

Style	Target Weight	Binder
T-050-080R	0.80-lbs/square	UF
T-050-100R	1.00-lbs/square	UF
T-050-120R	1.20-lbs/square	UF
T-050-140R	1.40-lbs/square	UF
T-050-160R	1.60-lbs/square	UF
T-050-240R	2.40-lbs/square	UF



R-series Fiberglass Mat

Standard Packaging

Material is rolled onto 6-inch I.D. heavy wall cardboard tubes. Rolls are shrinkwrapped, encapsulated in cardboard and palletized on end.

Width in Inches: Max. 82
Typical Roll Length in Feet: 6,000 - 12,000

Chemical Analysis (Nominal, % weight basis after firing)

Style	Fibrous Glass*	Binder Content**
GMC-T-050	>80%	UF <24%

*Oxides of silicon, aluminum, calcium, boron & magnesium fused in an amorphous vitreous state.

** Formaldehyde <0.1% (maximum % by weight)

Physical Properties

Style GMC-T-050-	080R	100R	120R	140R	160R	180R	200R	220R	240R
Color	White	White	White	White	White	White	White	White	White
Weight (target)	0.8-lbs/csf 40-g/m ²	1.0-lbs/csf 44-g/m ²	1.2-lbs/csf 59-g/m ²	1.4-lbs/csf 69-g/m ²	1.6-lbs/csf 78-g/m ²	1.8-lbs/csf 88-g/m ²	2.0-lbs/csf 98-g/m ²	2.2-lbs/csf 108-g/m ²	2.4-lbs/csf 118-g/m ²
Thickness (ave)	0.018-in 0.457-mm	0.020-in 0.508-mm	0.025-in 0.635-mm	0.026-in 0.660-mm	0.029-in 0.737-mm	0.036-in 0.914-mm	0.042-in 1.067-mm	0.043-in 1.092-mm	0.045-in 1.143-mm
Tensile Strength MD	37-lbs/2-in	45-lbs/2-in	50-lbs/2-in	56-lbs/2-in	58-lbs/2-in	64-lbs/2-in	68-lbs/2-in	72-lbs/2-in	76-lbs/2-in
Tensile Strength CD	25-lbs/2-in	30-lbs/2-in	35-lbs/2-in	36-lbs/2-in	40-lbs/2-in	44-lbs/2-in	48-lbs/2-in	51-lbs/2-in	54-lbs/2-in
Tear Strength MD	3.99-oz 113-g	4.09-oz 116-g	4.59-oz 130-g	5.82-oz 165-g	7.41-oz 210-g	8.11-oz 230-g	8.36-oz 237-g	8.64-oz 245-g	8.82-oz 250-g
Tear Strength CD	5.11-oz 145-g	6.35-oz 180-g	7.05-oz 200-g	8.11-oz 230-g	9.88-oz 280-g	11.29-oz 320-g	12.35-oz 350-g	12.87-oz 365-g	13.05-oz 370-g
Fiber Size	M (16μ)	M (16μ)	M (16μ)	M (16μ)	M (16μ)	M (16μ)	M (16μ)	M (16μ)	M (16μ)
Binder Content (min)	22.0%	22.0%	22.0%	22.0%	22.0%	22.0%	22.0%	22.0%	22.0%
Hot Wet Tensile Strength	45%	45%	50%	50%	50%	50%	50%	50%	50%

Refer to the Material Safety Data Sheet (MSDS) for recommended work practices and other product safety information.

This information is based on data that we believe to be reliable. It is intended to be used by persons having technical skills at their own discretion and risk. Since conditions of product use are outside our control, we make no warranties, expressed or implied, and no assume no liability in connection with any use with this information. Nothing herein is to be taken as a license to operate under or a recommendation to infringe upon any patents. REV.6/7/2010.