

LW-Series Fiberglass Mat

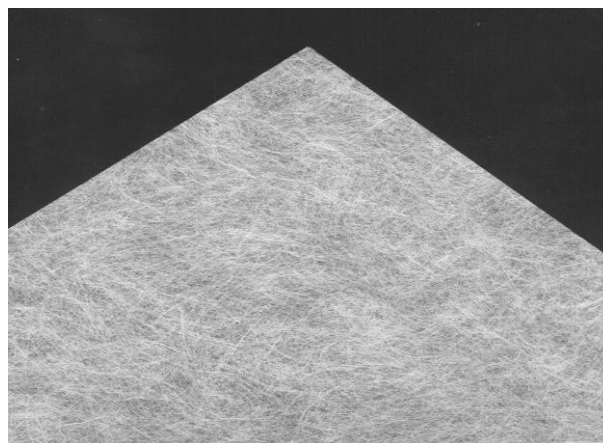
- 100% chopped E-grade fiberglass
- Wet-laid process mat
- Dimensionally stable
- Consistent fiber dispersion
- Consistent density

GarCo's LW-series mat is manufactured from consistent length chopped fiberglass yarn in a wet-laid process. This method of manufacture generates extremely uniform fiber dispersion providing superior physical and aesthetic properties. The LW-series light to medium weight mats have been accepted by industry as a solution for demanding requirements of stability and durability.

GarCo's LW-series mat is manufactured from M-fiber to produce consistent coverage and strength at competitive price. Both Modified UF and Acrylic binders are available to meet the needs of your process and product features.

Style	Target Weight	Binder
T-050-076	0.76-lbs/square	UF
T-050-080	0.80-lbs/square	UF
T-050-090	0.90-lbs/square	UF
T-050-100	1.00-lbs/square	UF
T-050-120	1.20-lbs/square	UF

Also available with machine direction reinforcement yarn.



LW-series Fiberglass Mat

Standard Packaging

Material is rolled onto 6-inch I.D. heavy wall cardboard tubes. Rolls are shrinkwrapped, encapsulated in cardboard and palletized on end.

Width in Inches: Max. 82
Typical Roll Length in Feet: 6,000 - 12,000

Chemical Analysis (Nominal, % weight basis after firing)

Style	Fibrous Glass*	Binder Content**
GMC-T-050	>80%	UF <24%

*Oxides of silicon, aluminum, calcium, boron & magnesium fused in an amorphous vitreous state.

** Formaldehyde <0.1% (maximum % by weight)

Physical Properties

Style GMC-T-050-	076	080	090	100	120
Color	White	White	White	White	White
Weight (target)	0.76-lb/csf 37-g/m ²	0.8-lb/csf 40-g/m ²	0.9-lb/csf 44-g/m ²	1.0-lb/csf 44-g/m ²	1.2-lb/csf 59-g/m ²
Thickness (ave)	0.018-in 0.457-mm	0.018-in 0.457-mm	0.019-in 0.483-mm	0.020-in 0.508-mm	0.023-in 0.584-mm
Tensile Strength MD	35-lbs/2-in	35-lbs/2-in	48-lbs/3-in	40-lbs/2-in	46-lbs/2-in
Tensile Strength CD	23-lbs/2-in	23-lbs/2-in	26-lbs/3-in	28-lbs/2-in	32-lbs/2-in
Tear Strength MD	3.58-oz 112-g	3.58-oz 112-g	3.62-oz 113-g	4.02-oz 114-g	4.23-oz 120-g
Tear Strength CD	4.48-oz 140-g	4.48-oz 140-g	4.64-oz 145-g	5.29-oz 150-g	6.42-oz 182-g
Fiber Size	M (16μ)	M (16μ)	M (16μ)	M (16μ)	M (16μ)
Binder Content (min)	22.0%	22.0%	22.0%	22.0%	22.0%
Hot Wet Tensile Strength	45%	45%	45%	45%	50%

Refer to the Material Safety Data Sheet (MSDS) for recommended work practices and other product safety information.

This information is based on data that we believe to be reliable. It is intended to be used by persons having technical skills at their own discretion and risk. Since conditions of product use are outside our control, we make no warranties, expressed or implied, and no assume no liability in connection with any use of this information. REV.6/7/2010.