

IW-Series Fiberglass Mat

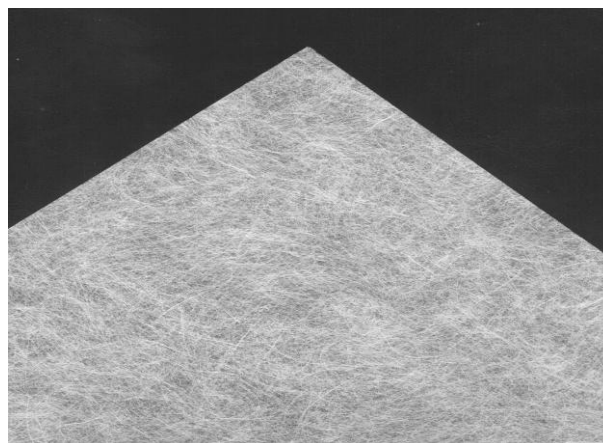
- 100% chopped E-grade fiberglass
- Wet-laid process mat
- Dimensionally stable
- Consistent fiber dispersion
- Consistent density

GarCo's IW-series mat is manufactured from consistent length chopped fiberglass yarn in a wet-laid process. This method of manufacture generates extremely uniform fiber dispersion providing superior physical and aesthetic properties. The IW-series medium weight mats have been accepted by industry as a solution for demanding requirements of stability and durability.

GarCo's IW-series mat is manufactured from M-fiber to produce consistent coverage and strength at competitive price. Both Modified UF and Acrylic binders are available to meet the needs of your process and product features.

Style	Target Weight	Binder
T-050-140	1.40-lbs/square	UF
T-050-160	1.60-lbs/square	UF
T-050-180	1.80-lbs/square	UF
T-050-200	2.00-lbs/square	UF
T-050-220	2.20-lbs/square	UF
T-050-240	2.40-lbs/square	UF

Also available with machine direction reinforcement yarn.



IW-series Fiberglass Mat

Standard Packaging

Material is rolled onto 6-inch I.D. heavy wall cardboard tubes. Rolls are shrinkwrapped, encapsulated in cardboard and palletized on end.

Width in Inches:	Max. 82
Typical Roll Length in Feet:	6,000 - 12,000

Chemical Analysis (Nominal, % weight basis after firing)

Style	Fibrous Glass*	Binder Content**
GMC-T-050	>80%	UF <24%

*Oxides of silicon, aluminum, calcium, boron & magnesium fused in an amorphous vitreous state.

** Formaldehyde <0.1% (maximum % by weight)

Physical Properties

Style GMC-T-050-	140	160	180	200	220	240
Color	White	White	White	White	White	White
Weight (target)	1.4-lbs/csf 69-g/m ²	1.6-lbs/csf 78-g/m ²	1.8-lbs/csf 88-g/m ²	2.0-lbs/csf 98-g/m ²	2.2-lbs/csf 108-g/m ²	2.4-lbs/csf 118-g/m ²
Thickness (ave)	0.026-in 0.660-mm	0.029-in 0.737-mm	0.036-in 0.914-mm	0.040-in 1.016-mm	0.043-in 1.092-mm	0.045-in 1.143-mm
Tensile Strength MD	54-lbs/2-in	57-lbs/2-in	62-lbs/2-in	66-lbs/2-in	70-lbs/2-in	74-lbs/2-in
Tensile Strength CD	35-lbs/2-in	38-lb/2-in	42-lbs/2-in	46-lbs/2-in	49-lbs/2-in	53-lbs/2-in
Tear Strength MD	5.64-oz 160-g	6.35-oz 180-g	7.94-oz 225-g	8.29-oz 235-g	8.47-oz 240-g	8.82-oz 250-g
Tear Strength CD	7.94-oz 225-g	8.47-oz 240-g	10.58-oz 300-g	11.99-oz 340-g	12.70-oz 360-g	13.05-oz 370-g
Fiber Size	M (16μ)	M (16μ)	M (16μ)	M (16μ)	M (16μ)	M (16μ)
Binder Content (min)	22.0%	22.0%	22.0%	22.0%	22.0%	22.0%
Hot Wet Tensile Strength	50%	50%	50%	50%	50%	50%

Refer to the Material Safety Data Sheet (MSDS) for recommended work practices and other product safety information.

This information is based on data that we believe to be reliable. It is intended to be used by persons having technical skills at their own discretion and risk. Since conditions of product use are outside our control, we make no warranties, expressed or implied, and no assume no liability in connection with any use with this information. Nothing herein is to be taken as a license to operate under or a recommendation to infringe upon any patents. REV.6/7/2010.