

CT-Series Fiberglass Mat

- 100% chopped E-grade fiberglass
- Wet-laid process mat
- Dimensionally stable
- Consistent fiber dispersion
- Consistent density

GarCo's CT-series mat is manufactured from consistent length chopped fiberglass yarn in a wet-laid process. This method of manufacture generates extremely uniform fiber dispersion providing superior physical and aesthetic properties. The CT-series mats have been accepted by industry as a solution for high stress, high temperature processing while offering excellent stability in the finished product.

GarCo's CT-series mat is manufactured from M-fiber to produce consistent coverage and strength at competitive price. Both Modified UF and Acrylic binders are available to meet the needs of your process and product features.

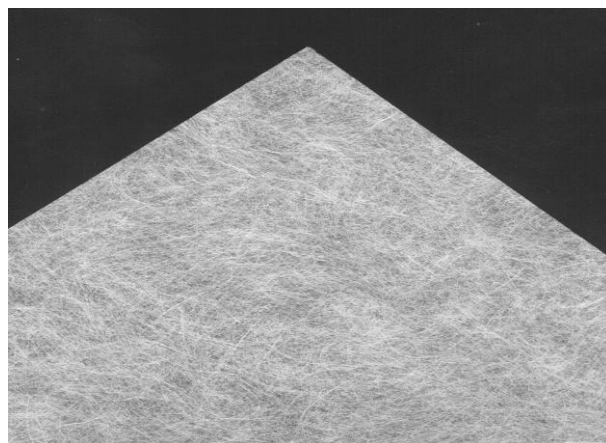
Style	Target Weight	Binder
T-050-090CT	0.90-lbs/square	UF
T-050-100CT	1.00-lbs/square	UF
T-050-135CT	1.35-lbs/square	UF
T-050-140CT	1.40-lbs/square	UF
T-050-180CT	1.80-lbs/square	UF

Also available with machine direction reinforcement yarn.

Physical Properties

Style GMC-T-050-	090CT	100CT	135CT	140CT	180CT
Color	White	White	White	White	White
Weight (target)	0.9-lb/csf 44-g/m ²	1.0-lb/csf 44-g/m ²	1.35-lbs/csf 67-g/m ²	1.4-lbs/csf 69-g/m ²	1.8-lbs/csf 88-g/m ²
Thickness (ave)	0.019-in 0.483-mm	0.020-in 0.508-mm	0.025-in 0.635-mm	0.026-in 0.660-mm	0.036-in 0.914-mm
Tensile Strength MD	48-lbs/3-in	40-lbs/2-in	50-lbs/2-in	54-lbs/2-in	62-lbs/2-in
Tensile Strength CD	26-lbs/3-in	28-lbs/2-in	34-lbs/2-in	35-lbs/2-in	42-lbs/2-in
Tear Strength MD	3.62-oz 113-g	4.02-oz 114-g	4.76-oz 135-g	5.64-oz 160-g	7.94-oz 225-g
Tear Strength CD	4.64-oz 145-g	5.29-oz 150-g	7.23-oz 205-g	7.94-oz 225-g	10.58-oz 300-g
Fiber Size	M (16μ)	M (16μ)	M (16μ)	M (16μ)	M (16μ)
Binder Content (min)	22.0%	22.0%	22.0%	22.0%	22.0%
Hot Wet Tensile Strength (min)	45%	45%	50%	50%	50%

Refer to the Material Safety Data Sheet (MSDS) for recommended work practices and other product safety information.



CT-series Fiberglass Mat

Standard Packaging

Material is rolled onto 6-inch I.D. heavy wall cardboard tubes. Rolls are shrinkwrapped, encapsulated in cardboard and stood on end (with or without pallet) or stacked on side.

Width in Inches:	Max. 82
Typical Roll Length in Feet:	6,000 - 12,000

Chemical Analysis (Nominal, % weight basis after firing)

Style	Fibrous Glass*	Binder Content**
GMC-T-050	>80%	UF <24%

*Oxides of silicon, aluminum, calcium, boron & magnesium fused in an amorphous vitreous state.

** Formaldehyde <0.1% (maximum % by weight)